



# welco me to the nei ghbou rhood

A new community with prime retail space

# The next chapter for E1

The premises are located on the junction with Commercial Street and Wentworth Street within the London Borough of Tower Hamlets.

The area enjoys exceptional transport links and is situated close to Aldgate East Underground Station and a short walk from Aldgate Underground Station, Whitechapel Overground Station and the Tower Gateway DLR line.



## The development and site opportunities

Cityscape is a prominent mixed use development site which will comprise 15,700 square feet retail/leisure, 12,000 square feet offices and 67,400 square feet of residential accommodation, equating to 352 apartments.

The Spitalfields and Aldgate area is undergoing significant regeneration at present with the developments at One Commercial Street, Aldgate Place, City Quarter, Aldgate Tower and 18 Alie Street.



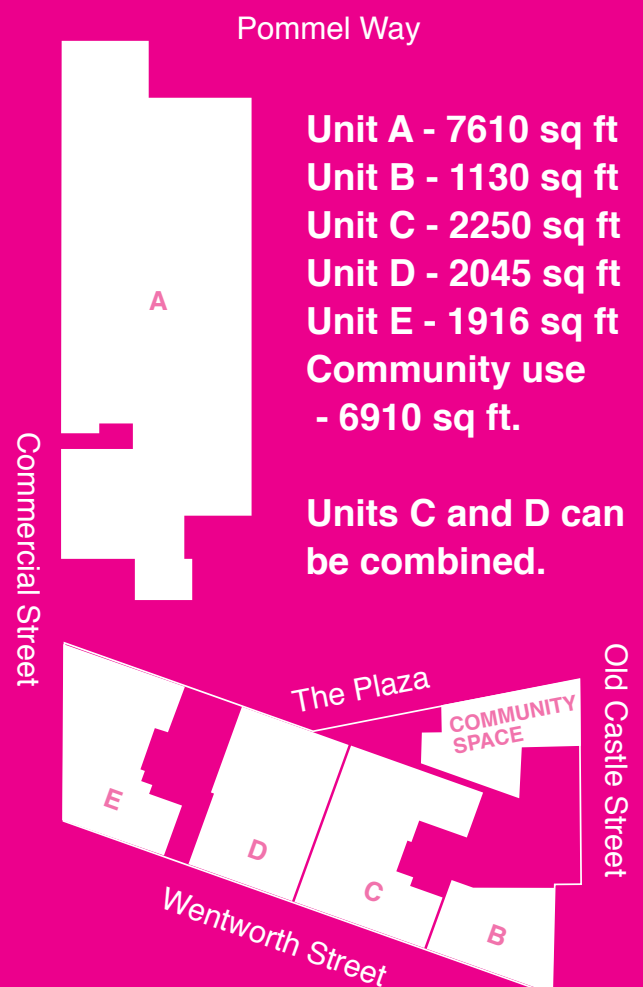
# The retail units

The surge in new developments will provide in excess of 5.2 million square feet of residential and commercial space in the direct vicinity.

Cityscape extends the existing retail and leisure circuit in fashionable Shoreditch – close to both Boxpark, Spitalfields and Truman Brewery.

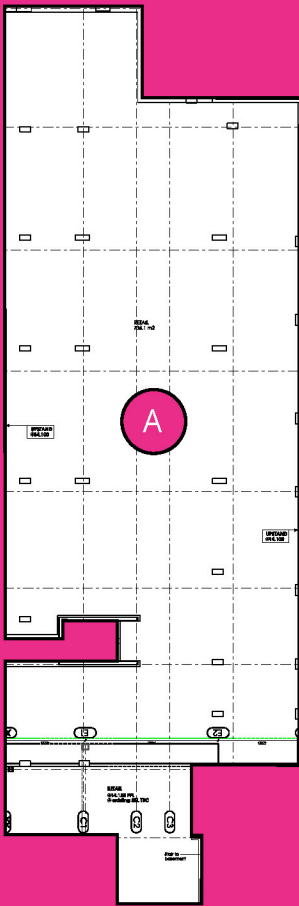
The scheme is situated at the junction Commercial Street, Wentworth Street and Old Castle Street.

6 units ranging in size from 1130 sq ft to 7610 sq ft with a mixture of uses (A1/A2/A3).

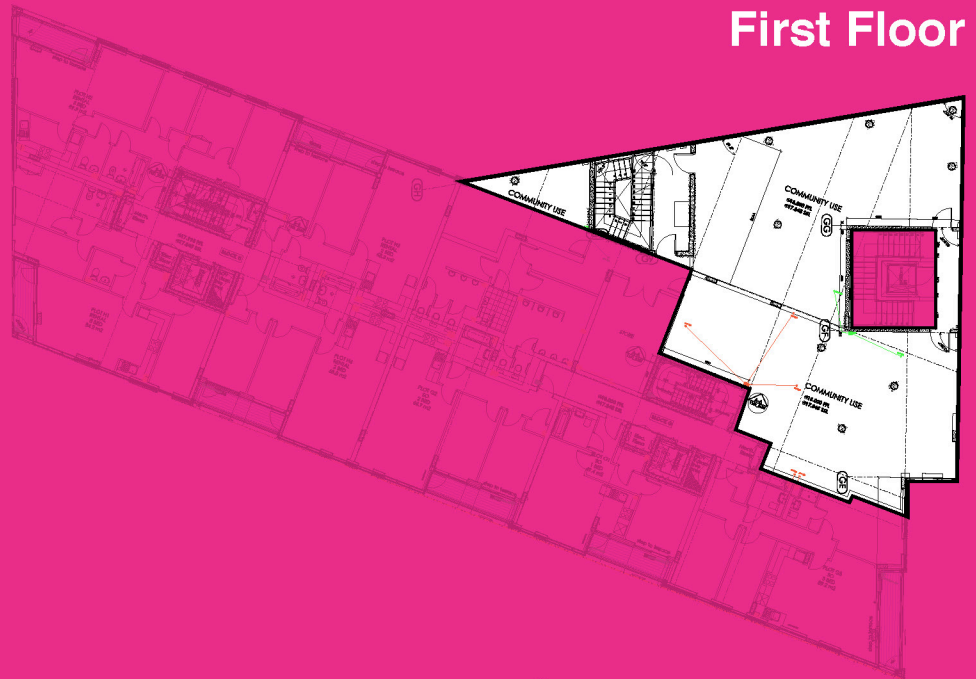


# FLOORPLANS AND AREA

Commercial Street



First Floor



Commercial Street

The Plaza

Old Castle Street



Ground Floor

## Details

Unit A - 7610 sq ft

Unit B - 1130 sq ft

Unit C - 2250 sq ft

Unit D - 2045 sq ft

Unit E - 1916 sq ft

Community use - 6910 sq ft.

Units C and D can be combined.

IMPORTANT: Sizes are from architects plans and are subject to onsite verification



# BRANDS IN THE AREA



Contact us



Pippa Page  
ppage@klmproperty.co.uk

James Fairley  
jfairley@klmproperty.co.uk

Mostafa Sbitri  
msbitri@klmproperty.co.uk

Tel: 0207 317 3700



Jeremy Perceval  
jeremyp@sfpgroup.com

Tim Murphy  
timm@sfpgroup.com

Tel: 0207 538 2222



IMPORTANT: These Particulars are believed to be correct but their accuracy is not guaranteed and they do not form part of any contract